

# Test Conductor™ Scheduler

## Unattended test execution for increased productivity

Quality assurance teams are constantly looking for ways to increase productivity, maximize resource utilization and shorten the testing cycle. Dedicated test labs equipment must be utilized to the fullest extent. Test engineers struggle to meet regression testing objectives while at the same time developing the new tests required for the next release. Test demands always increase; testing schedules do not.

Test Conductor's Scheduler is designed to maximize the utilization of the test equipment, allowing test engineers to focus on the areas where they provide the greatest value – new test development and post-run diagnosis and analysis.

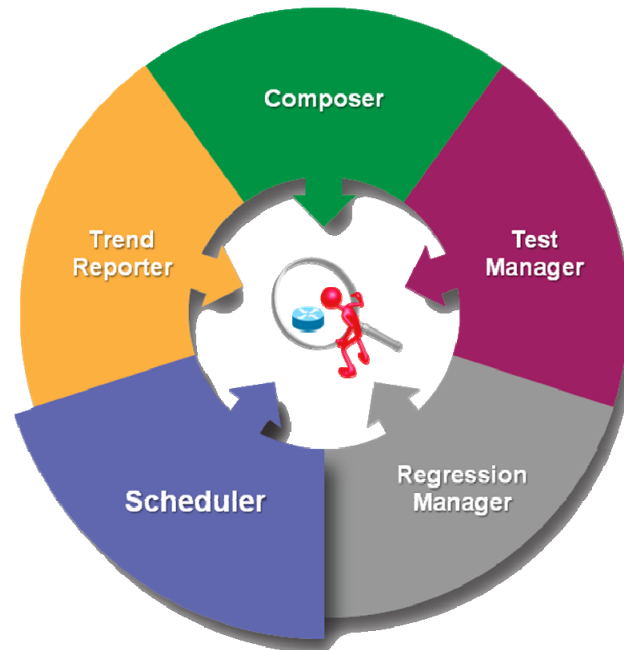


Figure 1. Test Conductor Components

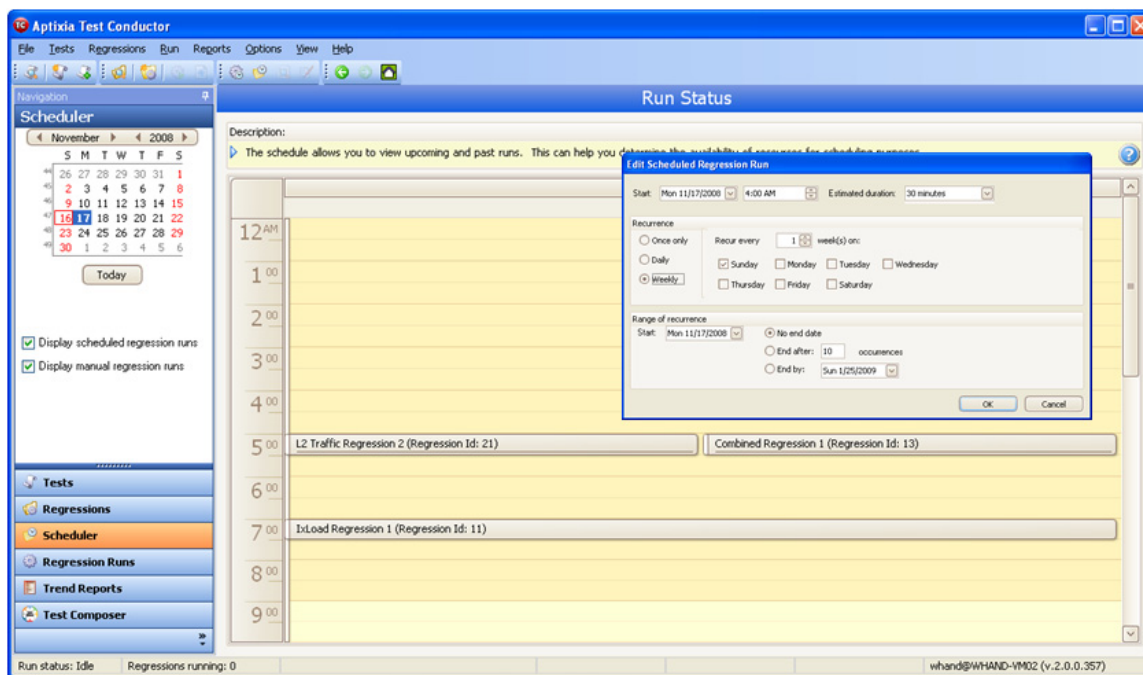


Figure 2. Scheduler Interface

## Key Features

- **Simple scheduling interface** – special scheduling scripts or batch files are no longer required to schedule tests. The Scheduler makes it extremely simple to create one-time or recurring test schedules utilizing a familiar calendar interface modeled after Microsoft's Outlook™.
- **Overall lab schedule view** – using the Scheduler's interface, test engineers can see a holistic view of the activities planned for the test lab. Resource availability expectations can be properly set by simply looking at the schedule and deciding when to insert a test plan for earliest possible execution.
- **Parallel test plans execution** – Scheduler maintains a catalog of available test systems. When tests are ready to execute, the Scheduler accesses the list of available test systems and schedules the test. Multiple tests can run concurrently, thus increasing the velocity of test execution within the lab.
- **Built-in test resource management** – in the event that tests are scheduled to run concurrently but require the same set of test resources, the Scheduler recognizes the conflict and queues the tests. As soon as the current test releases the required resources, the next test will immediately begin. In the unlikely event that the blocking test fails to complete in its

allotted time, the Scheduler will reclaim the resources so that scheduled tests are not indefinitely queued.

## **Product Ordering Information**

### **931-2400**

Test Conductor Client Bundle — Test Conductor full client application

*This material is for informational purposes only and subject to change without notice. It describes Ixia's present plans to develop and make available to its customers certain products, features and functionality. Ixia is only obligated to provide those deliverables specifically included in a written agreement between Ixia and the customer.*